



## SAILING INSTRUCTIONS

# 2006 ASIA PACIFIC LASER CHAMPIONSHIP

09 – 14 June 2006

National Sailing Centre, Singapore

The Organising Authority is The Singapore Sailing Federation

### 1 RULES

- 1.1 The regatta will be governed by the rules as defined in The Racing Rules of Sailing.
- 1.2 No national authority prescriptions will apply.

### 2 NOTICES TO COMPETITORS

- 2.1 Notices to competitors will be posted on the official notice board located at the multi-purpose hall in the National Sailing Centre (“NSC”).

### 3 CHANGES TO SAILING INSTRUCTIONS

- 3.1 Any change to the sailing instructions will be posted before 0900 on the day it will take effect, except that any change to the Schedule of races will be posted by 2000 on the day before it will take effect.

### 4 SIGNALS MADE ASHORE

- 4.1 Signals made ashore will be displayed at the flag staff located at the boatyard in NSC.
- 4.2 When flag AP is displayed ashore, ‘1 minute’ is replaced with ‘not less than 30 minutes’ in the race signal AP.

### 5 SCHEDULE OF RACES

- 5.1

Date	Time	
9 June 2006	1500	First warning signal for practice race
10 – 14 June 2006	1100	First warning signal, races to follow
- 5.2 Eleven (11) races are scheduled to be completed.
- 5.3 When there has been a long postponement and when more than one race (or sequence of races, for two or more classes) will be held on the same day, the warning signal for the first race and each succeeding race will be made as soon as practicable. To alert boats that a race or sequence of races will begin soon, an orange flag will be displayed with one sound for at least four minutes before a warning signal is displayed.
- 5.4 On the last day of the regatta no warning signal will be made after 1600.

### 6 CLASS FLAGS

- 6.1 Class flags will be:

<u>Class</u>	<u>Flag</u>
Laser Standard Rig	Yellow flag with the letters “LSR” in black
Laser Radial Rig	Dark pink flag with the letters “LR” in black

### 7 RACING AREA

7.1 Attachment 1 shows the location of the racing area.

## **8 THE COURSES**

8.1 The diagrams in Attachment 2 shows the courses, including the approximate angles between the legs, the order in which marks are to be passed and the side on which each mark is to be left.

8.2 When there is a gate, boats shall sail between the gate marks from the direction of the previous mark and round either gate mark.

## **9 MARKS**

9.1	Mark 1	Orange cone
	Mark 2	Yellow cone
	Mark 3	Yellow cone
	Mark 4	Orange cone
	New mark	Round pink
	Starting marks	Race committee signal boat and a starting line mark boat
	Finishing marks	Two finishing line mark boats

## **10 THE START**

10.1 Races will be started by using rule 26 with the warning signal given 5 minutes before the starting signal.

10.2 The starting line will be between staffs displaying orange flags on the race committee signal boat and a starting line mark boat.

10.3 Boats whose warning signal has not been made shall avoid the starting area.

10.4 A boat starting later than 4 minutes after her starting signal will be scored Did Not Start. This changes rule A4.

10.5 If any part of a boat's hull, crew or equipment is on the course side of the starting line during the two minutes before her starting signal, the race committee will display flag "V". It will be displayed until all boats have sailed completely to the pre-start side, but not after the starting signal.

## **11 CHANGE OF THE NEXT LEG OF THE COURSE**

11.1 To change the next leg of the course, the race committee will lay a new mark (or move the finishing line) and remove the original mark as soon as practicable. When in a subsequent change a new mark is replaced, it will be replaced by an original mark.

11.2 Except at a gate, boats shall pass between the race committee boat signalling the change of the next leg and the nearby mark, leaving the mark to port and the race committee boat to starboard. This changes rule 28.1.

## **12 THE FINISH**

12.1 The finishing line will be between staffs displaying blue flags on two finishing line mark boats.

## **13 PENALTY SYSTEM**

13.1 A boat that has taken a penalty under rule 31.2 or 44.1 shall complete an acknowledgement form at the Race Office within the protest time limit.

13.2 Appendix P will apply with the following change:

(a) On the first protest, if protested after she has finished, she will be given a scoring penalty of 6 points, without a hearing. If her score results in a score worse than DSQ, the penalty will be corresponding to DSQ.

(b) Rule P2.3 will not apply and rule P2.2 is changed so that it will apply to any protest after the first one.

13.3 Action taken by the International Jury under Appendix P will not be grounds for redress by a competitor.

## **14 TIME LIMITS**

- 14.1 The time limit is 90 minutes for all classes. Boats failing to finish within 20 minutes after the first boat finishes or within the time limit, whichever is the later, will be scored Did Not Finish. This changes rules 35 and A4.

## **15 PROTESTS AND REQUESTS FOR REDRESS**

- 15.1 Protest forms are available at the Race Office. Protests shall be delivered there within the protest time limit.
- 15.2 For each class, the protest time limit is 60 minutes after the last boat has finished the last race of the day. The same time limit applies to protests by the race committee and jury about incidents they observe in the racing area and to requests for redress. This changes rules 61.3 and 62.2.
- 15.3 The jury shall extend the time if there is good reason to do so.
- 15.4 Notices will be posted within 30 minutes of the protest time limit to inform competitors of hearings in which they are parties or named as witnesses. Hearings will be held in the jury room, located on the second floor of the main administration building in NSC.
- 15.5 Notices of protests by the race committee or jury will be posted to inform boats under rule 61.1(b).
- 15.6 A list of boats that, under instruction 13.3 have acknowledged breaking rule 42 or have been disqualified by the jury will be posted before the protest time limit.
- 15.7 Breaches of instructions 10.3, 13.1, 17, 18 and 22 will not be grounds for a protest by a boat. This changes rule 60.1(a). Penalties for these breaches may be less than disqualification if the jury so decides.
- 15.8 On the last day of the regatta a request for reopening a hearing shall be delivered:
- (a) within the protest time limit if the party requesting reopening was informed of the decision on the previous day;
  - (b) no later than 30 minutes after the party requesting reopening was informed of the decision on that day.

This changes rule 66

- 15.9 Decisions of the jury will be final as provided in rule 70.4.

## **16 SCORING**

- 16.1 The Low Point Scoring System, Appendix A2, will be used except as modified as follows:
- (a) Five (5) races will be required to be completed to constitute a championship.
  - (b) When 5 races have been completed, a boat's series score will be the total of her race scores.
  - (c) When 6 or more races have been completed, a boat's series score will be the total of her race scores excluding her worst score.
  - (d) When 10 or more races have been completed, a boat's series score will be the total of her race scores excluding her two worst scores.
  - (e) The Laser Standard Rigs will race and be scored as one fleet. The relative placing in the total fleet will determine the placing in the individual fleet.
  - (f) The Laser Radial Rigs will race and be scored as one fleet. The relative placing in the total fleet will determine the placing in the individual fleet.
  - (g) The results of the Women Radial Rig category shall be determined by removing all non-female competitors' scores from each race result.

## **17 SAFETY REGULATIONS**

- 17.1 Daily, competitors proceeding to the racing area shall sign out on the form provided at the Race Office prior to departure.
- 17.2 A competitor leaving the racing area early shall notify a race committee boat if possible, and if not, the Race Office immediately after returning.

- 17.3 Daily, competitors returning from the racing area shall sign in on the form provided at the Race Office prior to the end of the protest period.
- 17.4 Competitors shall wear life jackets or other adequate personal buoyancy at all times, other than for brief periods while adding or removing clothing, while afloat. Wet suits and dry suits are not adequate personal buoyancy.
- 17.5 All coach boats and other support boats/support personnel must aid any competitor in distress.

## **18 REPLACEMENT OF CREW OR EQUIPMENT**

- 18.1 Substitution of competitors will not be allowed.
- 18.2 Substitution of damaged or lost equipment will not be allowed unless approved by the jury. Requests for substitution shall be made to the jury at the first reasonable opportunity.

## **19 EQUIPMENT AND MEASUREMENT CHECKS**

- 19.1 A boat or equipment may be inspected at any time for compliance with the class rules and sailing instructions. On the water, a boat can be instructed by a race committee measurer to proceed immediately to a designated area for inspection.

## **20 BOAT IDENTIFICATION NUMBER**

- 20.1 Competitors shall stick a two digit boat identification number as shown in Attachment 3. The two digit number shall be provided by the Organising Authority.

## **21 OFFICIAL BOATS**

- 21.1 Official boats shall be marked as follows:
- |             |   |
|-------------|---|
| Mark boat   | White flag with the letter "A" in black |
| Safety boat | White flag with the letter "S" in black |
| Jury boat   | White flag with the letter "J" in black |

## **22 SUPPORT BOATS**

- 22.1 Except when rendering assistance to a boat in danger at the boat's request or at the request of the race committee, team leaders, coaches and other support personnel shall stay outside areas where boats are racing from the time of the preparatory signal for the first class to start until all boats have finished or the race committee signals a postponement, general recall or abandonment. The racing area shall extend 50 metres beyond all marks and laylines and 50 metres from starting and finishing lines.
- 22.2 Support boats shall be marked with the country code or national flags of the boats they are supporting.
- 22.3 The penalty for failing to comply with these requirements or the verbal instructions of the race committee or the jury will be at the discretion of the jury. The penalty may be applied to any or all the boats associated with the support or coach boat.

## **23 RADIO COMMUNICATION**

- 23.1 A boat shall neither make radio transmissions while racing nor receive radio communications not available to all boats. This restriction also applies to mobile telephones.

## **24 PRIZES**

- 24.1 Prizes will be awarded in accordance with ILCA By-Law 5.

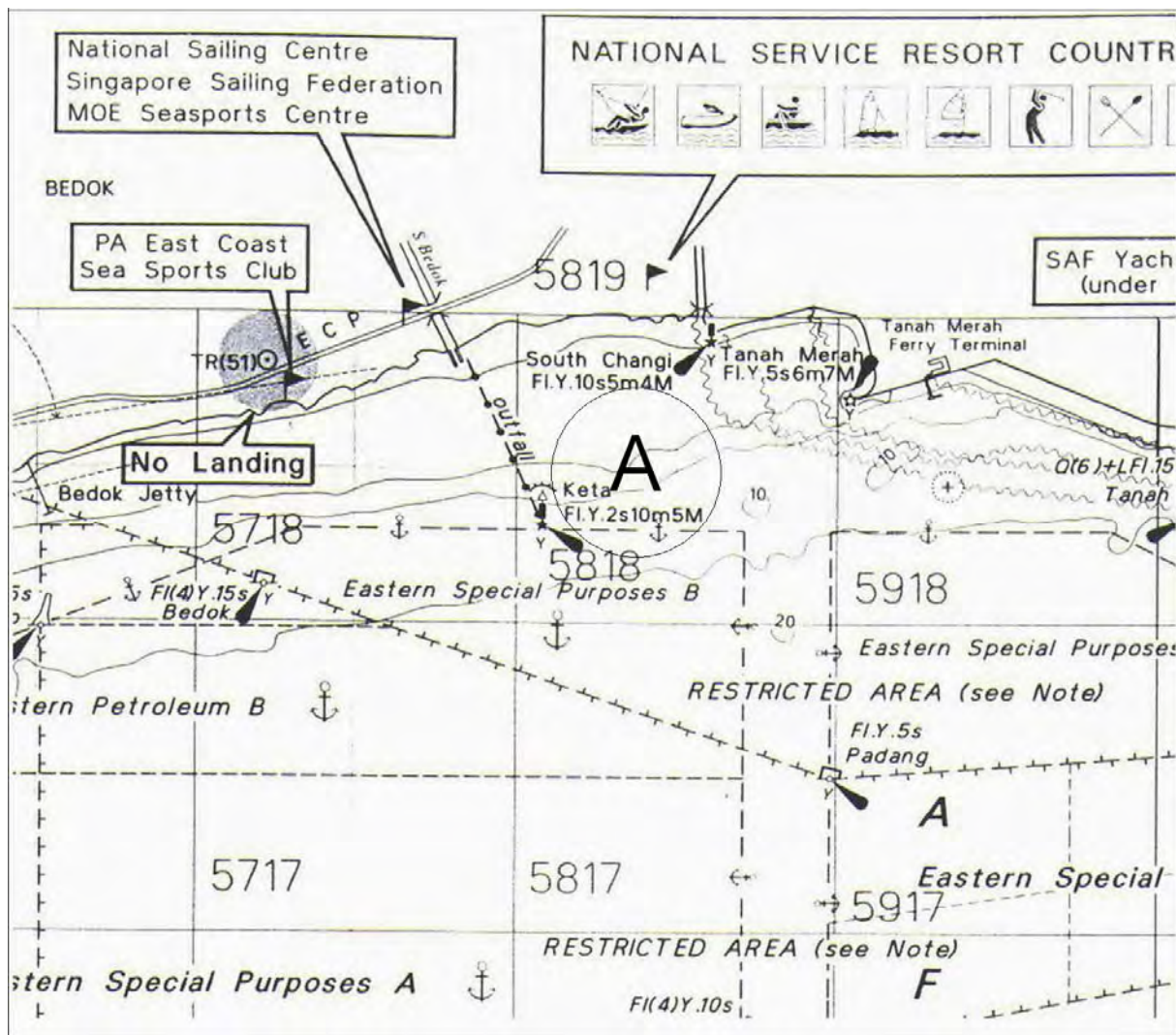
## **25 DISCLAIMER OF LIABILITY**

- 25.1 Competitors participate in the regatta entirely at their own risk. See rule 4, Decision to Race. The organizing authority will not accept any liability for material damage or personal injury or death sustained in conjunction with or prior to, during, or after the regatta.

## **26 INSURANCE**

- 26.1 Each participating boat is advised to be insured with valid third-party liability insurance.

ATTACHMENT 1 – Racing area

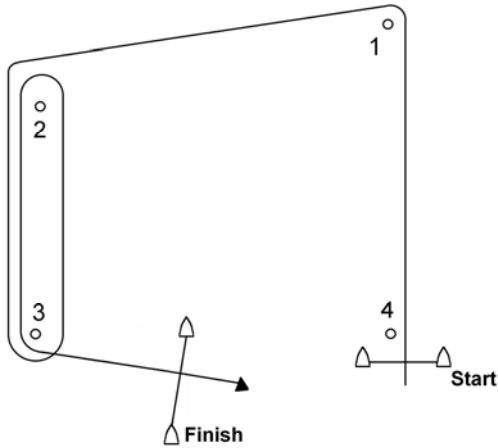


## ATTACHMENT 2 - Courses

### COURSE AREA ALPHA

All marks to be left to port

#### Trapezoid Course



*Trapezoid Courses (All marks to port)*

#### **Course Flag "I1" (Inner Loop – 1 lap)**

Start, Mark 1, Mark 4, Mark 1, Mark 2, Mark 3, Finish

#### **Course Flag "I2" (Inner Loop – 2 laps)**

Start, Mark 1, Mark 4, Mark 1, Mark 4, Mark 1, Mark 2, Mark 3, Finish

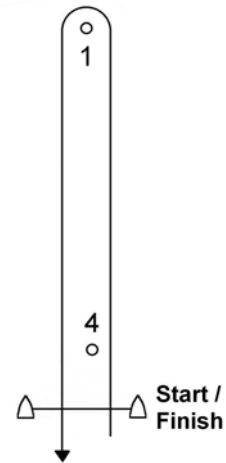
#### **Course Flag "O1" (Outer Loop – 1 lap)**

Start, Mark 1, Mark 2, Mark 3, Mark 2, Mark 3, Finish

#### **Course Flag "O2" (Outer Loop – 2 laps)**

Start, Mark 1, Mark 2, Mark 3, Mark 2, Mark 3, Mark 2, Mark 3, Finish

#### Windward / Leeward Course



*Windward / Leeward Courses*

(All marks to port)

#### **Course Flag "W1"**

Start, Mark 1, Mark 4, Mark 1, Finish

#### **Course Flag "W2"**

Start, Mark 1, Mark 4, Mark 1, Mark 4, Mark 1, Finish

### ATTACHMENT 3 – Boat Identification Number Positioning

1. Competitors shall stick a two digit boat identification number as shown below. The number shall be stuck on the starboard side of the sail above the top most batten.
2. The number allocated to each boat shall be in solid black for Laser Standard Rig and solid red for Laser Radial Rig.

